

Stratigraphy of the Arabian Plate workshops

Cambridge Carbonates offer clients a suite of 1/2 day virtual, or in-person, workshops, on the palaeogeographic, tectonic and sedimentological development of the Arabian Plate. The workshops are focussed on key stratigraphic intervals, with 1/2 day modules for the following intervals:

- Cenozoic
- Upper Cretaceous
- Middle Cretaceous
- Lower Cretaceous
- Jurassic
- Permo-Triassic
- Palaeozoic

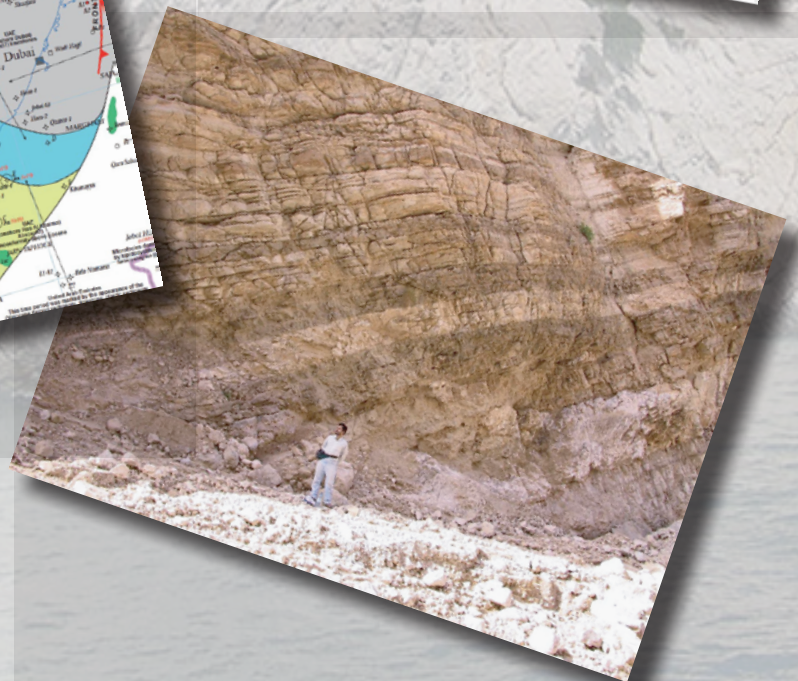
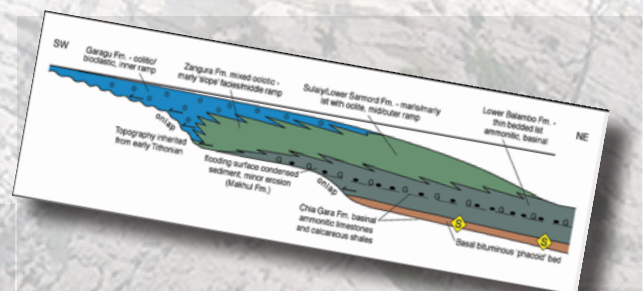
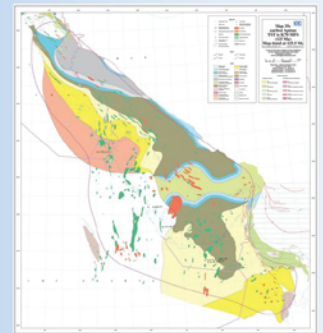
These workshops are aimed at exploration geoscientists who want to rapidly improve their knowledge of these complex systems, and can provide clients with a more regional understanding of their own acreage, which is often critical in development/production settings.

The workshops integrate the palaeogeographic mapping that Cambridge Carbonates have been developing for the past 30 years.

To arrange a workshop, please contact ANDY.

II. Late Valanginian – Aptian

- Initial Hauterivian-Barremian deposition dominated by:
- Outboard mostly shelfal (ramp) carbonates, especially during MFS and HST
- Clastic hinterland, with strong input during LST and TST
- Garau, Ratawi, Gadvan, Zubair, Lekhwair, Kharraib formations



Further information:
 Andy Horbury
andy@cambridgecarbonates.co.uk