

# Limestone Classification, after Dunham (1962)

Depositional texture recognisable					Depositional texture not recognisable
Original components not bound together during deposition				Original components were bound together	
Contains mud (clay and fine silt-size carbonate)			Lacks mud and is grain supported		Boundstone
Mud-supported		Grain-supported			
Less than 10% grains	More than 10% grains				
Mudstone	Wackestone	Packstone	Grainstone		

# Porosity Classification, modified after Choquette & Pray (1970)

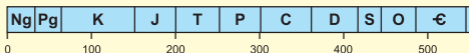
<b>Fabric Selective Porosity Types</b>			
	Interparticle (BP)		Fenestral (FE)
	Intraparticle (WP)		Shelter (SH)
	Intercrystalline (BC)		Growth framework (GF)
	Mouldic (MO)		Microporosity grains / matrix ( $\mu$ )
<b>Fabric Selective or Not</b>		<b>Not Fabric Selective</b>	
	Breccia (BR)		Fracture (FR)
	Boring (BO)		Channel (CH)
	Burrow (BU)		Vug (VUG)
	Shrinkage (SK)		Cavern (CV)

Cambridge Carbonates Ltd

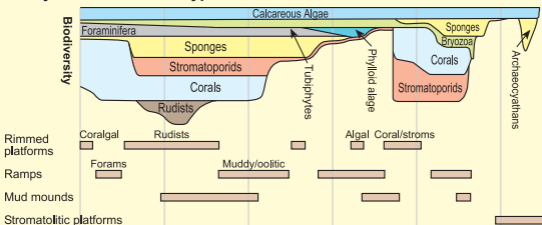
email : [info@cambridgecarbonates.co.uk](mailto:info@cambridgecarbonates.co.uk)

[www.cambridgecarbonates.com](http://www.cambridgecarbonates.com)

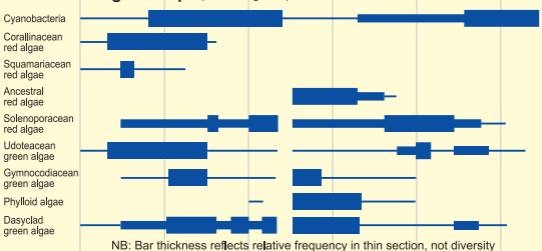




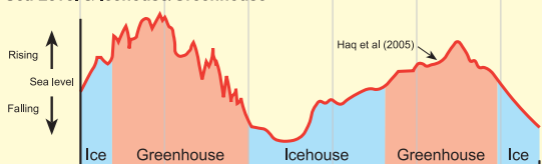
### Ecosystems / Platform Types (from James 1983)



### Calcareous Algal Groups (from Riding 1991)



### Sea Level & Icehouse/Greenhouse



### Sea Water Chemistry (from Lowenstein et al 2003)



### Strontium Isotopes (from McArthur et al 2001)

